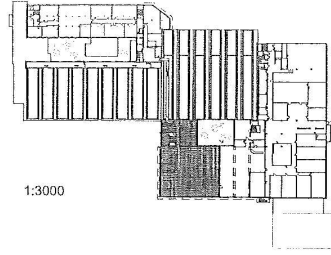
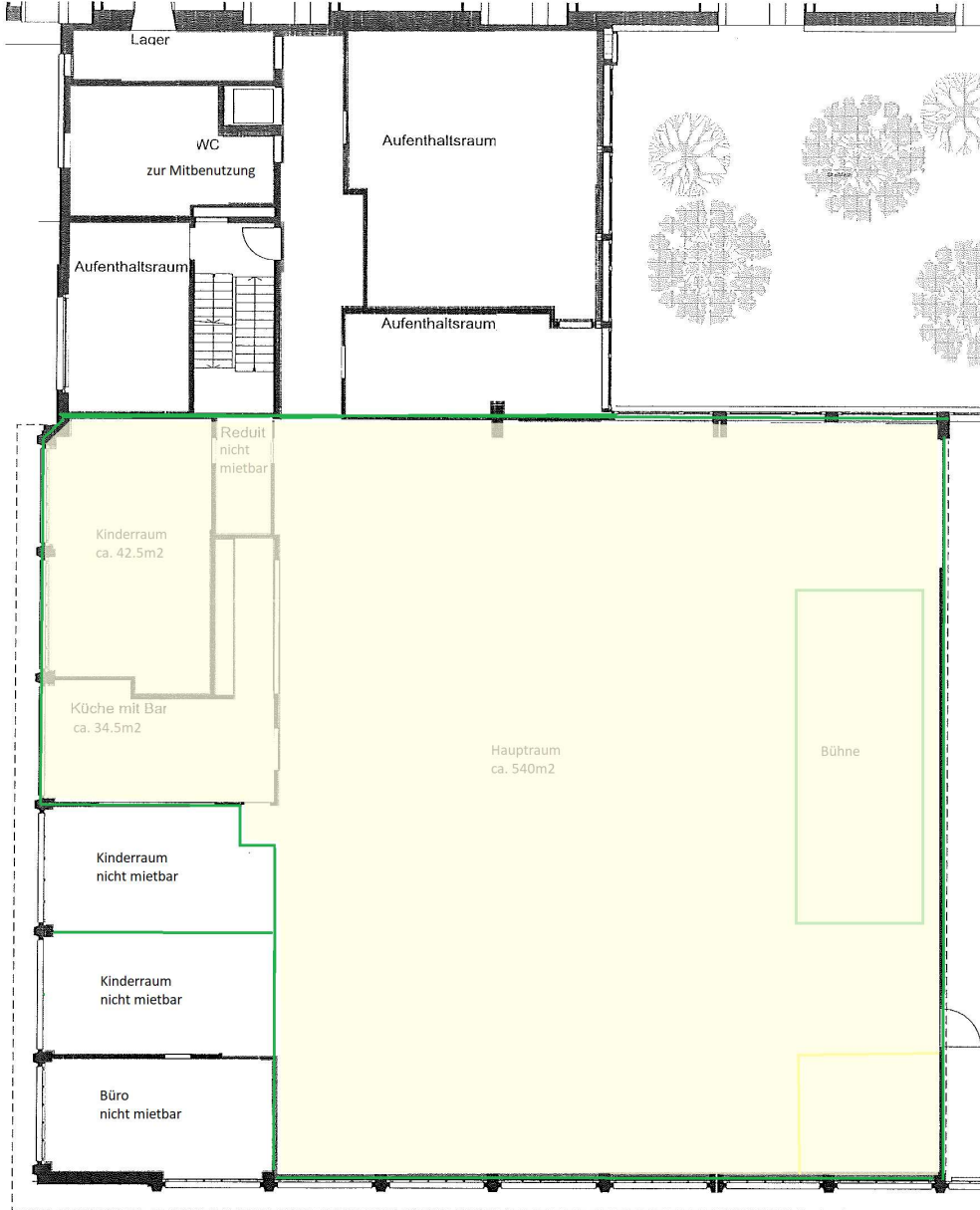




mietbare Fläche (Hauptraum, Kinderraum, Küche, Bar)



1:3000



1:200

MASTERPLAN	Stand 01.11.2011	
Projekt	Hanroareal, Benzburweg 18, 4410 Liestal	
Mieter	Vineyard Liestal	Datum 03.11.11
Plan 03	1. Obergeschoss Raum 61 122-130	Mst. 1:3000, 1:200
Architektur	baubüro insitu AG Büro Liestal Benzburweg 18 4410 Liestal fon 061 921 55 31 fax 061 921 55 35 info@insitu.ch	Grösse A4 Gez.